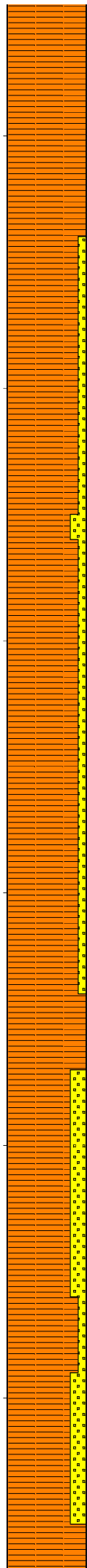
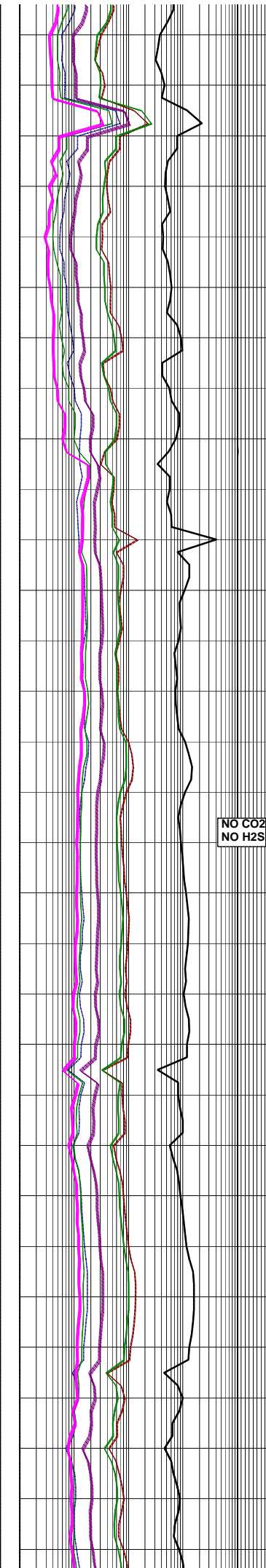
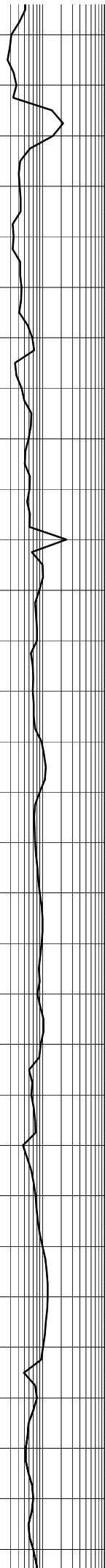


2990
3000
3010
3020
3030
3040



83/1/6/3/1
77/8/9/4/2
83/6/5/3/3
84/7/5/3/1
83/7/5/3/2



lt brn/gry,arg,aren i/p,micmic,
tr liths,tr carb spks,sft-mod,
hd,occ hd,sbblky.

**7" CASING SHOE
SET @ 2998m**

**Bit 4 : REED DSX516M
Size: 6" Jets:5x14
In: 3002m Out: 3230m
Run: 228m Hrs: 12.73 hrs
Cond: x-x-xx-x-x-x-xx-xx**

**LOT @ 3005m with 9.5ppg
2275psi, EMW = 13.8 ppg**

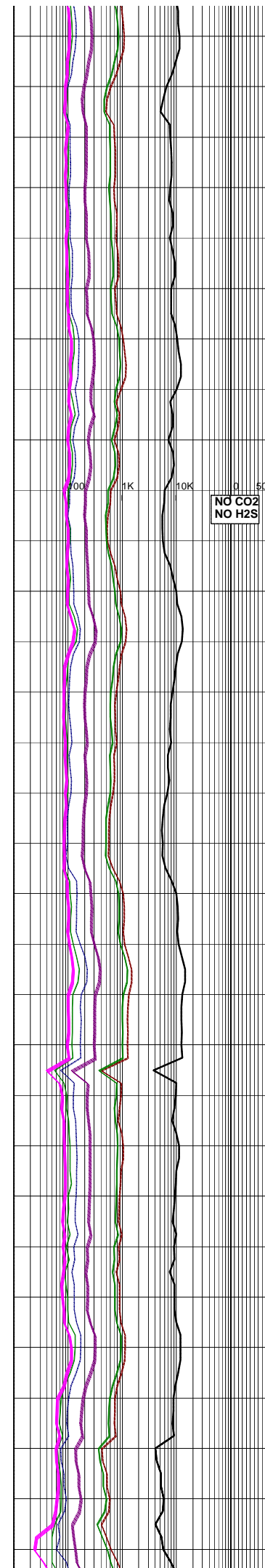
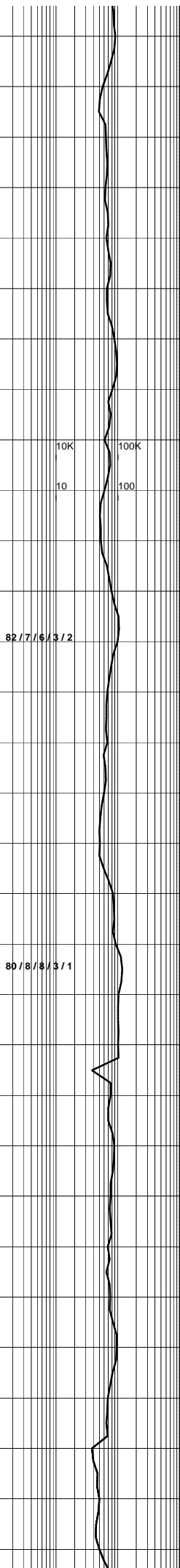
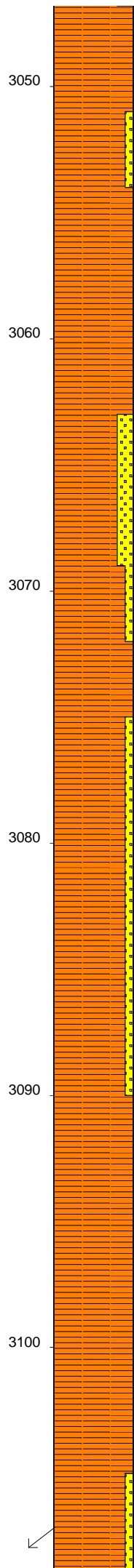
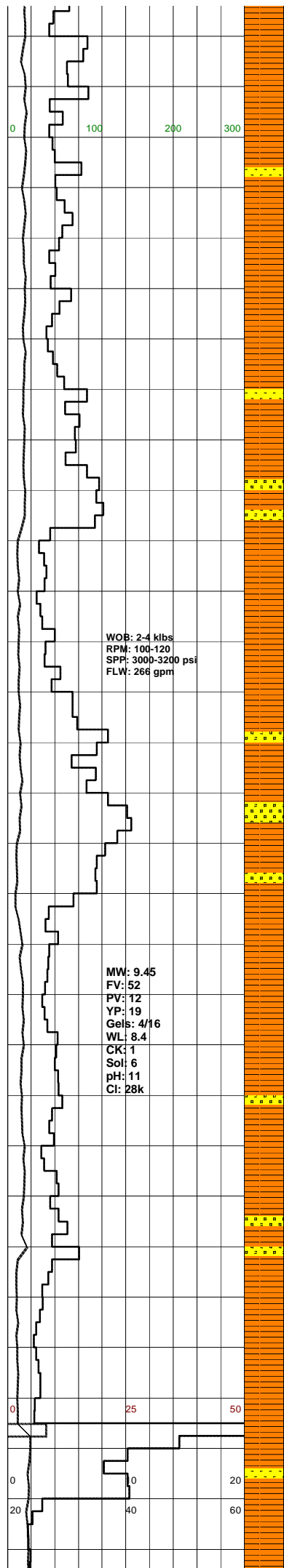
**SANDSTONE:off wh,pl gry i/p,vf-f,
mod wl srt,sbrnd,com mod strg sil
cmt,abdt off wh arg mtx,tr fld liths,
tr carb spks,mod hd-hd,v pr vis por,
no fluor.**

**NO CO2
NO H2S**

**SILTY CLAYSTONE:med-dk gry,med
brn/gry,aren,com grd to SLTST,mnr
micmic,tr carb spks & off wh liths,
mod hd-hd,biky.**

SURVEY @ 3020.0m: 6.75° 332T

**SANDSTONE:pl gry,off wh i/p,vf-f,
mod wl srt,sbrnd,com mod sil cmt,
mnr off wh/pl gry arg mtx,tr lt brn liths,
mod hd,v pr vis por, no fluor.**



SILTY CLAYSTONE: dk gry, dk brn/ gry, aren, com grd to SLTST, mnr micmic, tr off wh liths, mod hd, hd ip, blkly-sbbkly.

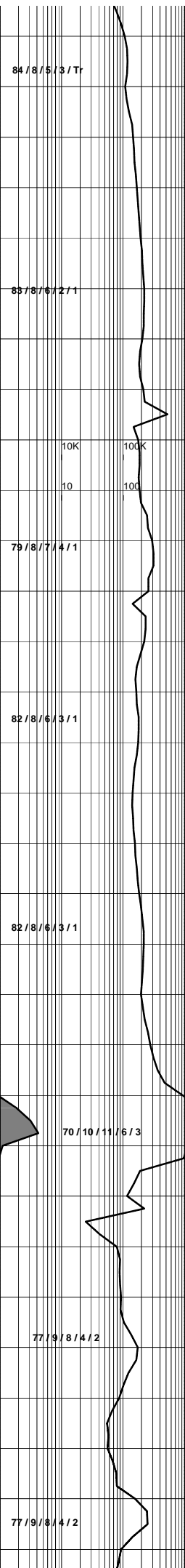
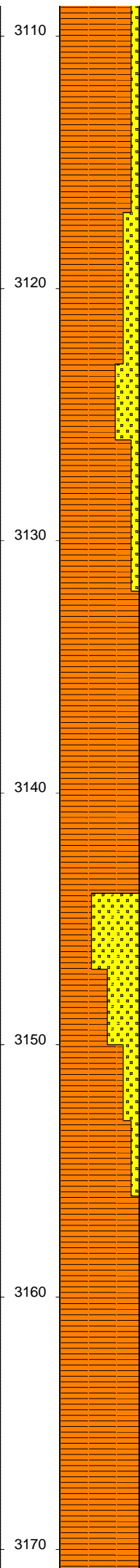
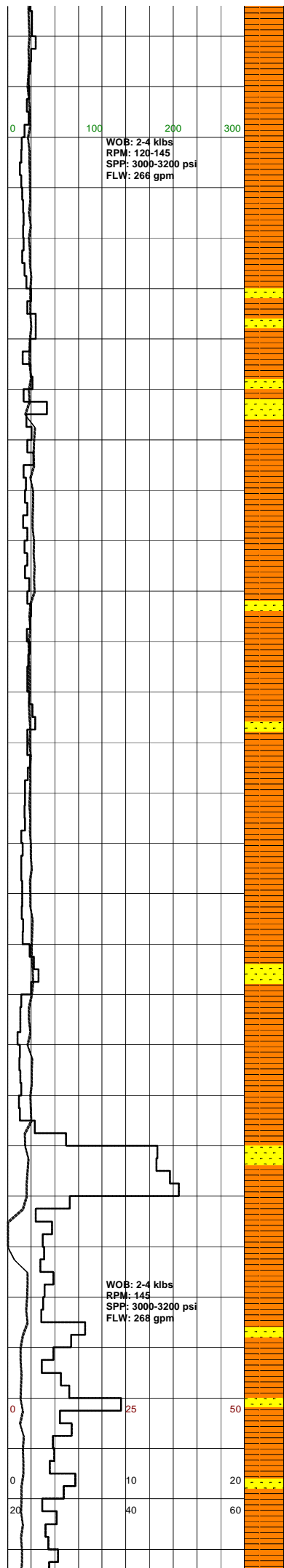
SANDSTONE: off wh, lt gry ip, vf-f, mod wl srt, sbang-sbrnd, mod strg sil cmt, mnr off wh arg mt, com carb spks, tr gr/brn liths, mod hd, v pr vis por, no fluor.

SILTY CLAYSTONE: v dk gry, dk brn/ gry, occ pl grn/ gry, aren, com grd to SLTST, tr carb spks & lt brn liths, mod hd, occ frm, sbbkly.

SILTY CLAYSTONE: v dk gry, dk brn/ gry, occ pl grn/ gry, aren, com grd to SLTST, tr carb spks & lt brn liths, mod hd, occ frm, sbbkly.

SLOW ROP DUE TO BIT BALLING

SURVEY @ 3108.0m: 8.5° 342T



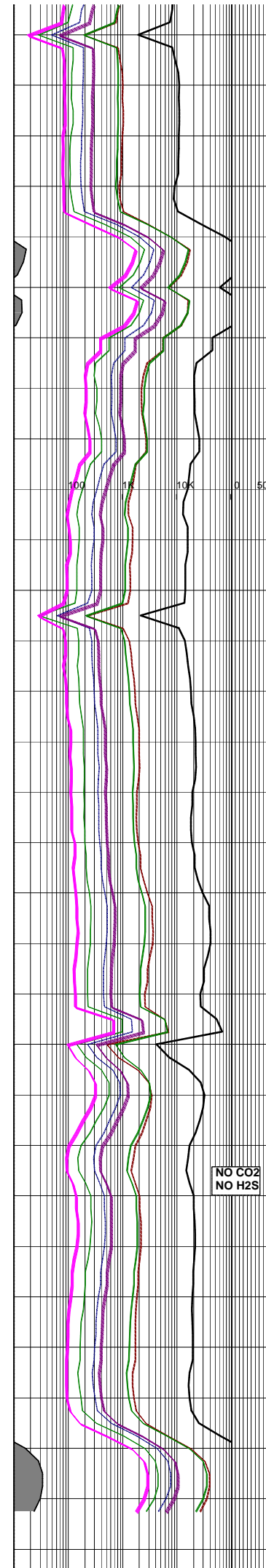
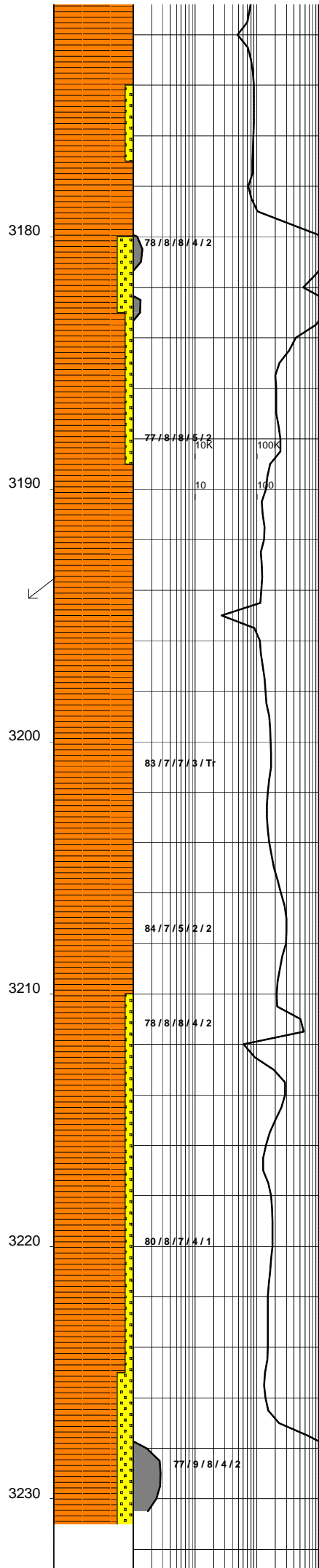
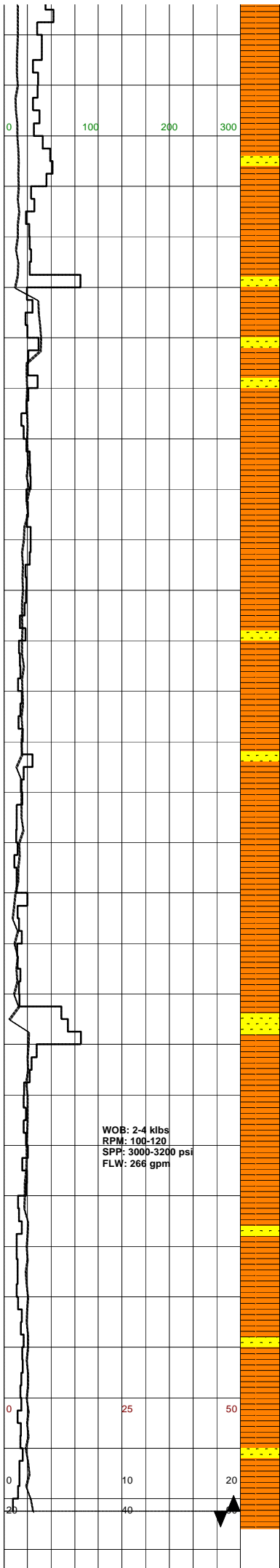
SILTY CLAYSTONE: dk-med gry, dom dk gry, occ lt gry, lt brn gry, arg, aren i/p, grd to SLTST, feebly calc, micmic, tr liths, tr carb spks, sft-mod hd, occ hd, sbbiky.

SANDSTONE: wh, off wh, lt gry, f-med, dom f, pr-mod srt, sbang-sbrnd, mod calc cmt, occ sil cmt, tr feld, abdt blk, brn, grn, gry, red liths, mod-occ hd, no vis por, min flour only.

SILTY CLAYSTONE: dk-med gry, dom dk gry, occ lt gry, lt brn gry, arg, aren i/p, grd to SLTST, feebly calc, micmic, tr liths, tr carb spks, sft-mod hd, occ hd, sbbiky.

SANDSTONE: wh, off wh, lt gry, f-med, dom f, pr-mod srt, sbang-sbrnd, mod calc cmt, occ sil cmt, tr feld, abdt blk, brn, grn, gry, red liths, mod-occ hd, no vis por, min flour only.

SILTY CLAYSTONE: dk-med gry, dom dk gry, occ lt gry, lt brn gry, arg, aren i/p, grd to SLTST, feebly calc, micmic, tr liths, tr carb spks, sft-mod hd, occ hd, sbbiky.



SANDSTONE:wh.off wh.lt gry,f-med.dom f,pr-mod srt,sbang-sbrnd, mod calc cmt,occ sil cmt,tr feld, abdt blk.brn.grn.gry.red liths, mod-occ hd,no vis por,min flour only.

SURVEY @ 3194.0m: 9.25° 352T

SILTY CLAYSTONE:dk-med gry,dom dk gry,occ lt gry,lt brn gry,arg, aren i/p,grd to SLTST,feebly calc, micmic,tr liths,tr carb spks,sft-mod hd,occ hd,sbblky.

SILTY CLAYSTONE:dk-med gry,occ lt gry,lt brn gry,aren i/p,grd to SLTST,feebly calc,micmic,tr liths,tr carb spks,sft-mod hd, occ hd,sbblky.

